

# Case Study: Sleepy Hollow Fire



Photo by Komonews

Wildfire ravages through the neighborhoods of the hills in Wenatchee, Washington. Over 1,000 people were issued Level Three evacuation orders. Approximately 3,000 acres of land and 30 homes and businesses were destroyed.

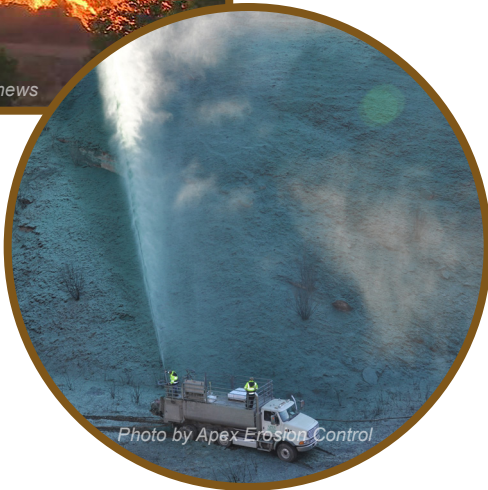


Photo by Apex Erosion Control



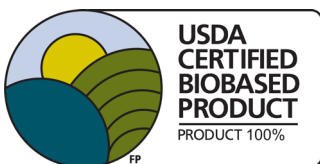
Photo by Apex Erosion Control



Photo by City of Wenatchee

On June 28, 2015, the Sleepy Hollow fire ignited around 2:15 in the afternoon. High winds propelled the fire to the east and south toward the city of Wenatchee. By Monday afternoon, Level Three evacuations were issued to more than 1,000 residents as well as many businesses in the area. Strong winds and triple digit temperatures spread the fire quickly from where it started approximately three miles west of the town. Crews and trucks from seven Chelan County fire districts and three Douglas County fire districts responded to the blaze. By Monday evening, aerial bucket drops from two helicopters were underway to assist with controlling the fire. More than 3,000 acres as well as 30 homes and businesses were burned in the blaze before it was contained a week later.

The City of Wenatchee and the Community Foundation of North Central Washington funded the restoration project and contracted John Larson with APEX Erosion Control of Clarkston to spray the slopes to prevent erosion in the spring. *NaturesOwn*® X9000 hydro seeding mulch mixed with organic grass seed varieties found locally were applied to the slopes. The mulch was purchased from HMI, Hamilton Manufacturing, Inc. in Twin Falls, Idaho. HMI and APEX were able to provide their expertise from past fire reclamation projects such as the Charlotte Fire and others.



Product of the USA

**Hamilton Manufacturing, Inc.**

800-777-9689 • [www.hmi-mfg.com](http://www.hmi-mfg.com)

901 Russet Street • Twin Falls, ID 83301 USA



# Case Study: Sleepy Hollow Fire



**NaturesOwn**® X9000 is a 100% biobased blend of high tensile biodegradable bast fibers, cellulose fibers, and a non-toxic biopolymer based tackifier. Contractors have trusted **NaturesOwn**® mulch for decades. The ease of handling, high loading capacity with smooth mixing, seamless application, outstanding results and cost savings makes this product a contractor favorite. High loading capacity uses less water which reduces costs for water, fuel and labor. Projects can be covered quicker with a product that is easy to apply and designed to last while saving water and enhancing germination by contouring to the soil surface to conserve moisture and create a semi-permeable barrier to water loss. Large Scale Erosion Control testing performed by TRI Environmental shows that it is 99.7% effective against erosion.

Just six short months after the X9000 was applied to the slopes and less than a year after the devastating fire, new germination can be seen and the area is quickly returning to its previous landscape.



*Photo by Apex Erosion Control*

*Steep slopes near residential areas were sprayed from above.*



*Photo by City of Wenatchee*



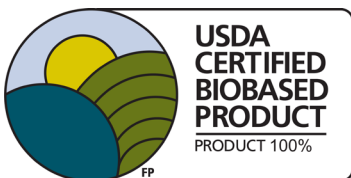
*Just six months after the X9000 and seed was applied to the slopes, there is significant growth of new vegetation.*

*Photo by City of Wenatchee*



*Photo by Hamilton Manufacturing Inc*

*Regrowth one year after the fires and just six months after application of hydro mulch.*



Product of the USA

**Hamilton Manufacturing, Inc.**  
800-777-9689 • [www.hmi-mfg.com](http://www.hmi-mfg.com)  
901 Russet Street • Twin Falls, ID 83301 USA

